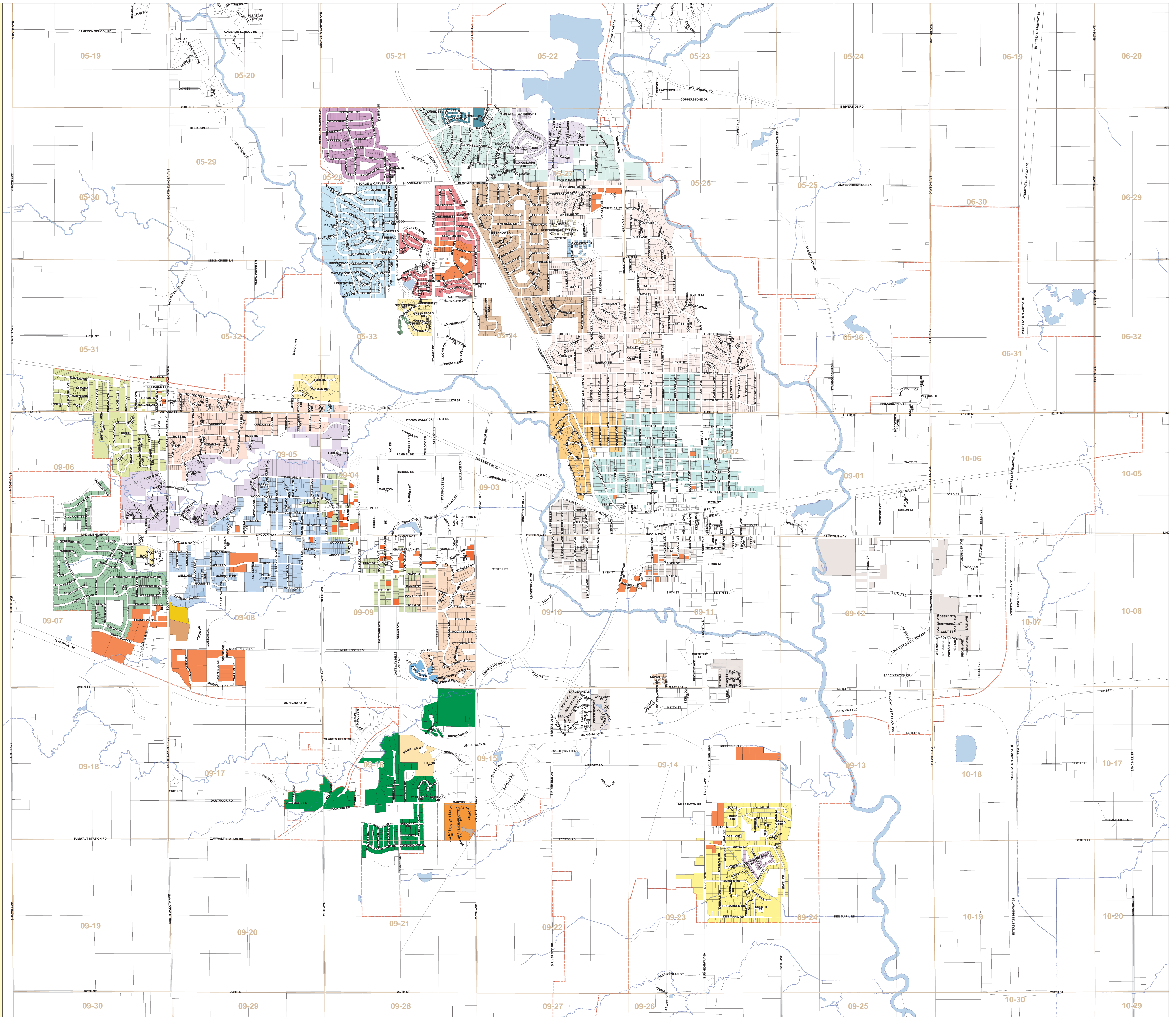


Residential Assessment Neighborhoods

09-Feb-09

(#) Name [Multiplier]

- (8) IOC ISU [94]
- (9) IOCondo [89]
- (10) MsCondo [99]
- (11) BrDale [102]
- (12) NoPkVII [109]
- (13) Greens [113]
- (14) MeadowV [90]
- (15) Bluestm [99]
- (16) WilwCr1 [81]
- (17) WilwCr2 [85]
- (18) Landmrk [94]
- (19) GrnHill [154]
- (20) Stonebr [104]
- (21) Blmngtn [105]
- (22) NRldgHt [104]
- (23) Wessex [93]
- (24) NoRidge [101]
- (25) Veenker [98]
- (26) Timber [103]
- (27) ClearCr [103]
- (28) Somerst [101]
- (29) Gilbert [97]
- (30) NW Ames [99]
- (31) N Ames [100]
- (32) BrkSide [106]
- (33) OldTown [102]
- (34) IDOT&RR [102]
- (35) Mitchel [99]
- (36) Crawfor [106]
- (37) S&W ISU [99]
- (38) Edwards [98]
- (39) Sawyer [101]
- (40) SawyerW [98]
- (41) CollgCr [98]



City of Ames
Assessor's Office

E

0 460 920 1,840 2,760 3,680 Feet

1:13,200